

sabre

perimeter systems

remsdaq
EXTENDING THE BOUNDARIES OF TECHNOLOGY

SabreTape – Taut Wire Systems

Sabretape is part of Remsdaq's unique range of perimeter intrusion detection systems employing highly resilient fibre optic sensors. This field-proven and highly reliable technology is extensively used in government, military and industrial applications around the world and supported by an extensive network of approved installers.

Sabretape delivers outstanding operational performance whilst its mechanical construction presents a high level of deterrent and delay to would-be intruders.

Sabretape consists of a specially prepared mild steel tape, which is pre-galvanised and polyester coated. A fibre-optic sensor is laid into the tape, which is then sealed. Sabretape is available with either an aggressive (barbed) or non-aggressive finish.

Sabretape is normally installed as a complete fence system or as a series of collapsible, anti-climb outriggers, added to an existing fence. Sabretape outriggers may also be used independently and are ideal for protecting gates, walls or the sides of a building.

Sabretape operates on the principle of fibre-optic continuity sensing. Its performance is unaffected by lightning or other electromagnetic interference and, as the sensor is intrinsically safe, it is suitable for installation in hazardous environments.

Sabretape has its own purpose-built electronics unit and junction/connection posts and can be supplied in single and multiple zone configurations.



- OFFERS THE HIGHEST LEVEL OF DETECTION WITH VIRTUAL ZERO FALSE ALARM RATE
- PERFORMANCE UNAFFECTED BY LIGHTNING OR ELECTROMAGNETIC INTERFERENCE
- HIGHLY RESILIENT AND IMMUNE TO TAP, TAMPER AND SABOTAGE
- SUITABLE FOR HIGH SECURITY, PRISON AND MILITARY APPLICATIONS
- IDEAL FOR OPERATION IN THE MOST HOSTILE ENVIRONMENTS



SabreTape – Taut Wire Systems

Technical Specifications

SabreTape Zone Processor
Remsdaq Part Number
12265

Power Requirements

External supply: 12V DC
Consumption: 16mA @ 12V DC

Sensor Cable and Connections

SabreTape sensor cable loop, one end (TX) terminated with SMA connector, other end (RX) terminated in a proprietary snap-in connector.

Method of Detection

Laser diode transmitter and detector using photo-diode receiver.

Alarm Relay Output

One single pole relay contact with changeover contacts rated for 1A @ 12V DC.

Tamper Circuit Input

An input is provided to monitor a tamper switch mounted in the enclosure.

Connections

All electrical connections to the PCB are made via screw terminals

Environmental Specification

Operating Temperature Range: -10°C to +50°C
Storage Temperature Range: -40°C to +80°C
Relative Humidity: Up to 95% (non-condensing) at +40°C.

Electromagnetic Compatibility

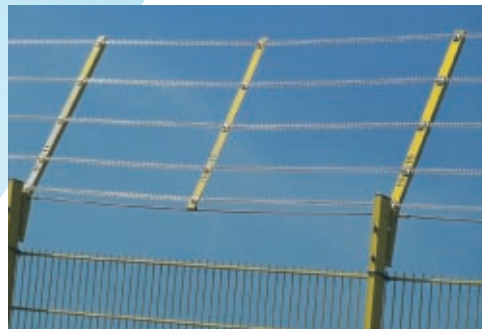
The SabreTape zone processor meets the requirements of EN55022: 1998, EN55082-1: 1998 and Low Voltage Directive 93/68/EEC.

Dimensions

110mm x 81mm (Zone Processor PCB without enclosure)

SabreTape Sensor

A single 50/125, multi-mode optical fibre with PVC sleeve laid into a polyester-coated tape fabricated in pre-galvanised mild steel to BS 2928.



Remsdaq Limited Parkway Deeside Industrial Park Deeside Flintshire CH5 2NN United Kingdom

Telephone +44 (0) 1244 286495 Facsimile +44 (0) 1244 286496

Internet www.remsdaq.com e-mail sales@remsdaq.com

Remsdaq has a policy of continuous product development and improvement.
Whilst all information is correct at the time of going to press,
we reserve the right to make changes without notice. All trademarks are duly acknowledged.



HCD/S13/01



Certified by Afnor UK



Certified by Afnor UK