

New Product Launch

EntroWatch Access Control Software v3

Robin Koffler

DDI: +44 (0) 1244 286 495

Mobile: 07788 720 979

Email: rk@remsdaq.com



The Entro Product Range



EntroNet
8-door access controller

EntroWatch v3
access control software

EntroStar
2-door access controller

EntroPad
keypad



EntroPad
Desktop USB Reader and
Management Kit



EntroPad
Card Reader



EntroPad
RTE



EntroPass
Secure Credentials



<https://www.remsdaq.com/solutions/integrated-security-systems/access-control-software/entrowatch-software/>



Introduction

- EntroWatch is the access control software for EntroStar (2-door) and EntroNet (8-door) access door controllers running v3.0.54 (or later) and the EntroPad desktop reader (USB).
- EntroWatch v3 supersedes v1.3.7 and is available in three versions:
 - EntroWatch Standard (free)
 - EntroWatch PE which is an enhanced version with additional features.
 - EntroWatch CS which is the Certified Secure (CS) version for CPNI sites and as listed in the Catalogue of Security Equipment (CSE). CPNI stands for Centre for The Protection of Critical National Infrastructure and covers critical UK government sites.
- EntroWatch v3 includes a new licensing model, delivery method, a host of new access control features and integrations for HIKVision, IEVO Biometric controllers and the Remsdaq Sabre II Perimeter Intrusion Detection System (PIDS).
- There is no direct upgrade path from v1.3.7 to v3. The Remsdaq Engineering team can provide upgrade assistance as required.



New Integrations (PE only)

CCTV Cameras	Biometric Readers	Fence Perimeter Intrusion
HIKVision	IEVO Ultimate	Remsdaq Sabre II PIDS
Providing live playback of camera streams and tagging and playback of events using associated cameras whilst recording persists	Add a fingerprint credential to a user within EntroWatch and use IEVO biometric readers as part of your access control implementation	Receive Sabre II alarms within EntroWatch including cut, climb and tamper on an external perimeter fence installation
HIK Vision – NVR/HDVR/DVR: DS-9600, DS-9500, DS-7700, DS-7600 series; DS-9000, DS-8000-ST, DS-7600 series; DS-9100, DS-8100, DS-8000-S, DS-8800, DS-7800, DS-7300, DS-7200, DS-7100, DS-7000 series	IEVO Biometric Controllers – R4 with Ultimate or Micro reader heads IEVO Biometric Enrolment Readers – Ultimate (Black) and Micro USB devices	When used in conjunction with a Sabre II processor board fitted with a BACnet/IP device gateway

HIKVISION



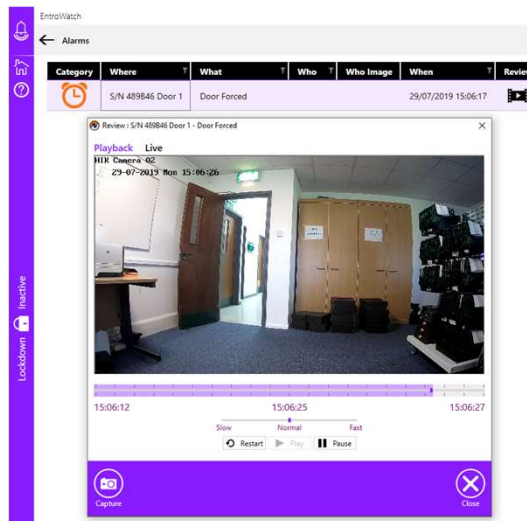
ievo



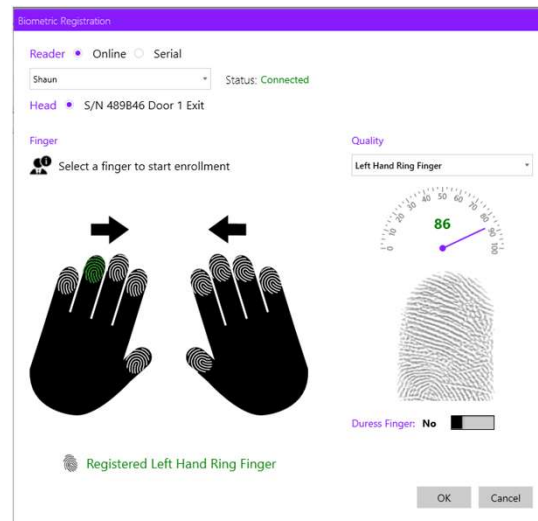
sabre



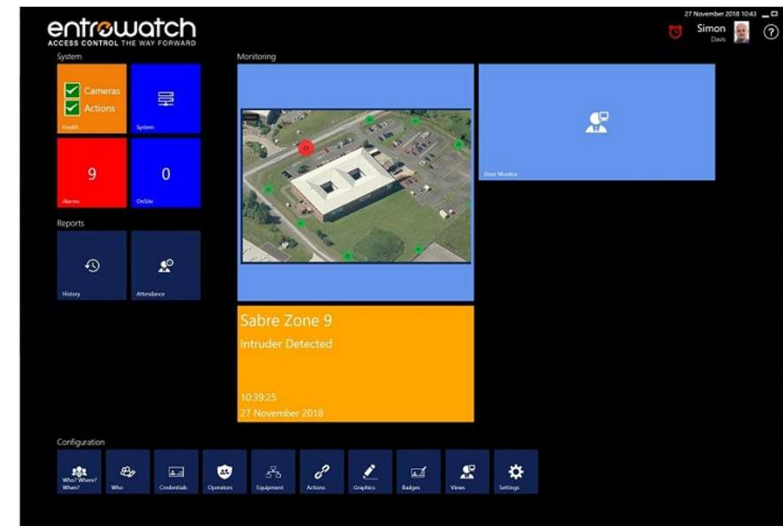
Screens Shots from EntroWatch PE



HIKVision of events using associated cameras



IEVO Biometric Reader finger print credential set-up



Sabre II PIDS zone alarms



Other New Features

- **Actions:** Serial and Email notifications (PE Only)
- **Alarms:** Automatic popup and stacking (PE Only)
- **Alarms:** resolution codes
- **Credentials:** new credential management screen, includes locate credential feature when an EntroPad desktop reader is attached
- **Dashboard:** Customizable dashboard
- **EntroNets** are now a supported controller
- **EntroPad** desktop USB reader support for credential registration
- **Generics:** 3rd Party generic IP device support (PE Only) - device must support COV subscriptions, Digital IO only
- **Operator Permissions:** enhanced operator permissions
- **Operators:** dual logon, auto logoff (PE Only)
- **Passwords:** operator password rules
- **PINS:** enhanced PIN rules and automatic generation



Other New Features...continued

- **Presence Points:** doors can be configured as presence points to use exclusively for online card registration – you do not get unknown card alarms from a present point. Configuration of a presence point then prevents the use of any other access control readers as a means to register cards
- **Relocation:** move offsite automatically
- **SWA:** System Wide Accountability – enhanced passback where you must also be where you are meant to be as well as not where you are going (PE Only)
- **User Fields:** unique string field and externally accessible options
- **X-VLAN:** routed network support for controllers
- **Verification:** Access verification support (PE Only)



Licensing Model

- There are 3 versions of the software with Standard provided free and PE and CS charged for:

Product Name	Part Nos	Edition	Licenses
EntroWatch	EN-SW-0100	Standard	1 server, 1 client, 50 devices, 500 cards
EntroWatch PE	EN-SW-0200	Premium (PE)	1 server, 2 clients, 100 devices, 500 cards
EntroWatch CS	EN-SW-0300	Certified Secure (CS)	CPNI pack

- Additional Bolt-ons include:

Part Nos	Licenses	Compatible Version(s)
EN-SW-0401	Additional client license	PE
EN-SW-0402	501 to 5,000 card licenses	Standard, PE
EN-SW-0403	5,000 to 250,000 card licenses	PE

- For pricing refer to the Remsdaq Security Products price list. An EntroWatch v3 comparison table is provided at: <https://www.remsdaq.com/support/software-comparison-table/>



Delivery – Sending The Software

- A software request form is available on the Remsdaq website at: <https://www.remsdaq.com/solutions/support/software/>
- When the form is submitted it is sent to marketing@remsdaq.com. The sales team record the request within their CRM system and pass on the request to the Remsdaq Software Library.
- The Remsdaq Software Library update their contact and issue records in terms of the version sent to the client and issue an FTP link which they email to the client.
- For sites that cannot download the software a DVD is available upon request and a charge may be made for postage and packing.



Registration and Licensing Process

- The EntroWatch installation process generates a Registration ID which should be mailed to productregistration@remsdaq.com with contact details and purchase order details if applicable.
- The Product Registration team then check the Registration ID within a NetKey database and issues a License Key applicable to the version of EntroWatch installed (Standard) and features required (Premium Edition).
- Upon receipt of the License Key the user must enter the key and restart EntroWatch.
- Please note EntroWatch v3 must be registered within 30 days of installation or login is disabled.



Standard Features

- **Alarms handling:** unattended system alarm suppression
- **Alarm resolution codes:** prescribed
- **Attendance reports:** built-in reporting suite
- **Automatic discovery:** of EntroStar and EntroNet door controllers and Sabre PIDS gateway
- **Badge designer:** integrated badge design facility
- **Calendars:** to provide variations to access rights, scheduled actions and holidays
- **Customisable dashboards:** per user
- **Credential relocation:** nightly relocation for everyone back offsite
- **Custom tile views:** configure screens to look as you need them
- **Device limits:** up to 50 panels (100 doors EntroStar or 400 doors with EntroNet)
- **Door monitor:** monitor specific doors
- **Interlock facility:** access based on the condition of another door(s)
- **Fire door support:** unlock a set of doors using an input from a fire alarm panel
- **Global lockdown:** issue a single command to lock down a site
- **Graphics engine:** import and superimpose controllable and monitoring features
- **Logical anti-passback:** prevents a credential from being used to re-enter an area



Standard Features

- **Mapping:** one-to-many peer-to-peer I/O mapping
- **Onsite report:** list or tile view for who is on site
- **Operator roles:** settable operator roles
- **Passback and PIN immunity**
- **Personal Identification Codes (PIC):** numeric credentials (PIC)
- **PIDS integration:** with Sabre II systems installed with the Sabre BACnet/IP gateway option
- **Pin to dashboard:** tile creation (outputs, inputs, doors)
- **Reader integrations:** Remsdaq EntroPad card readers and keypads
- **Scheduled actions:** manual, automatic and scheduled including interlock facility
- **Design to standards:** UL 294 and 1076
- **Video:** ONVIF (streaming / screen capture)
- **Choice of user languages:** English (UK), English (USA), Spanish, Danish, Dutch, Finish, French, Hungarian, German, Italian, Norwegian, Portuguese, Portuguese (Brazilian), Polish, Romanian, Russian, Swedish, Turkish, Arabic, Chinese (simple), French Canadian, Malay and Welsh



Premium Edition (PE) Features

- **Access verification:** operator controlled access approval combined with a CCTV image
- **Advanced alarm processing:** associate camera and graphics with an alarm
- **Alarms with alert:** auto pop-up
- **Automatic credential disable:** for a period of time after a wrong pin has been input
- **BACnet/IP device integration:** generic third-party device interface (I/O only)
- **Card tracing:** alert on card use
- **CCTV integration:** Milestone XProtect Access plug-in
- **Custom card formats & editor:** allows for non-standard card encoding (site code, parity check)
- **Device limits:** up to 100 panels (200 doors EntroStar or 800 doors with EntroNet)
- **Email and serial notifications:** on alarm
- **Enhanced operator setting:** multi-session, auto log off, auto lock, dual logon
- **Enhanced passwords:** enforced strength and renew periods
- **Enhanced PINs:** automatic generation, PIN rules
- **Multiple client licenses pack:** max 9 SQL express, max 19 with full SQL



Premium Edition (PE) Features

- **Person import:** using a CSV file to import records
- **Read only access database**
- **Reader integrations:** IEVO biometric readers
- **Serial notifications:** on alarm
- **System wide accountability:** a form of enhanced anti-passback
- **Video:** Hikvision (streaming, pre / post alarm / screen capture)



Certified Secure (CS) Features

Available as part of the Remsdaq CPNI portfolio. Information available upon application or via the CPNI (Centre for the Protection of National Infrastructure) website.

- **Encrypted communications:** between the door controllers and EntroWatch (CPNI CS version)

The full CPNI version includes the EntroWatch CS software and EntroNet door controllers within a metal cabinet with battery backup and other features. The CPNI version is designed for installation on an isolated network and without third-party system integrations. The CPNI versions is for critical national infrastructure type applications.



Approved for UK Government use.
For details please contact CPNI.



EntroWatch Marketing Information

- The EntroWatch page on the Remsdaq website provides an overview of the product:
<https://www.remsdaq.com/solutions/integrated-security-systems/access-control-software/entrowatch-software/>
- The page lists:
 - Features and Benefits,
 - Specifications
 - Documents,
 - FAQs
 - Video link to the EntroWatch YouTube channel
(<https://www.youtube.com/user/EntroWatch>)



Helpdesk

For assistance during or post installation please contact our Helpdesk team.

- Tel: +44 - (0) 1244 286 490
- Email: helpdesk@remsdaq.com

If required our Engineering team can provide remote installation assistance but this may be charged for.



Training

Remsdaq provides training course for EntroWatch.

- EntroWatch / EntroStar Installer training (1 day)
- EntroNet / EntroStar Installer training (1 day)

These courses are run at our Deeside facility in the UK.

For more on available course and how to apply for them see:

<https://www.remsdaq.com/solutions/support/training/>



Department Contact Points

For more information please refer to your contact at Remsdaq, visit our website at www.remsdaq.com or contact one of the departments below.

Department	Email	Telephone
Sales	sales@remsdaq.com	44 (0) 1244 286 495
Marketing	marketing@remsdq.com	
Helpdesk	helpdesk@remsdaq.com	
Training	training@remsdaq.com	

If you would like a webinar on EntroWatch v3 please email Robin Koffler : rk@remsdaq.com

