

**Smart Remote Terminal Units (RTUs)  
for Substation Automation and Control**

# Callisto NX Smart RTU and Software Range

Callisto NX is a modular RTU solution with software tools for use in automation projects.



### Callisto NX plug-in modules

- PSU or battery charger
- DI/DO configurations
- Analogue AC/DC
- Communications



For supply to DNOs, IDNOs, TSOs, systems integrators and switchgear companies in applications from Generation and Transmission to Distribution and LV supplies.





**Celeste**<sup>nx</sup>  
energy edition

Master Station Software Suite



**CaSE**<sup>nx</sup>

User Friendly Callisto<sup>nx</sup> Software Editor



**PILOT**<sup>nx</sup>

Programmable Integrated Logic Tool



**VIEW**<sup>nx</sup>

Embedded Web Server



**Touch**<sup>nx</sup>

Touch screen colour graphics LUI

# UK Manufactured Callisto NX Smart Solutions



11kV RMU RTU



415/220V LV RTU



11kV RMU RTU



11kV RMU/OH 1-6 Switches



132/33kV Primary RTU Retrofits



415/220V LV RTU (slave)



132/33kV New Substation RTU

Callisto NX RTUs in custom cabinet solutions.  
Made by Remsdaq at our Deeside, North Wales manufacturing facility.




Certified by Afnor UK



# UK DNO / TSO Callisto Smart RTU Customers




 275kV, 132kV

 132kV, 33kV and 11kV

 132kV, 33kV

 33kV

 20kV and 11kV

 11kV, 415/220V

 11kV  
bun shirveishyn vannin

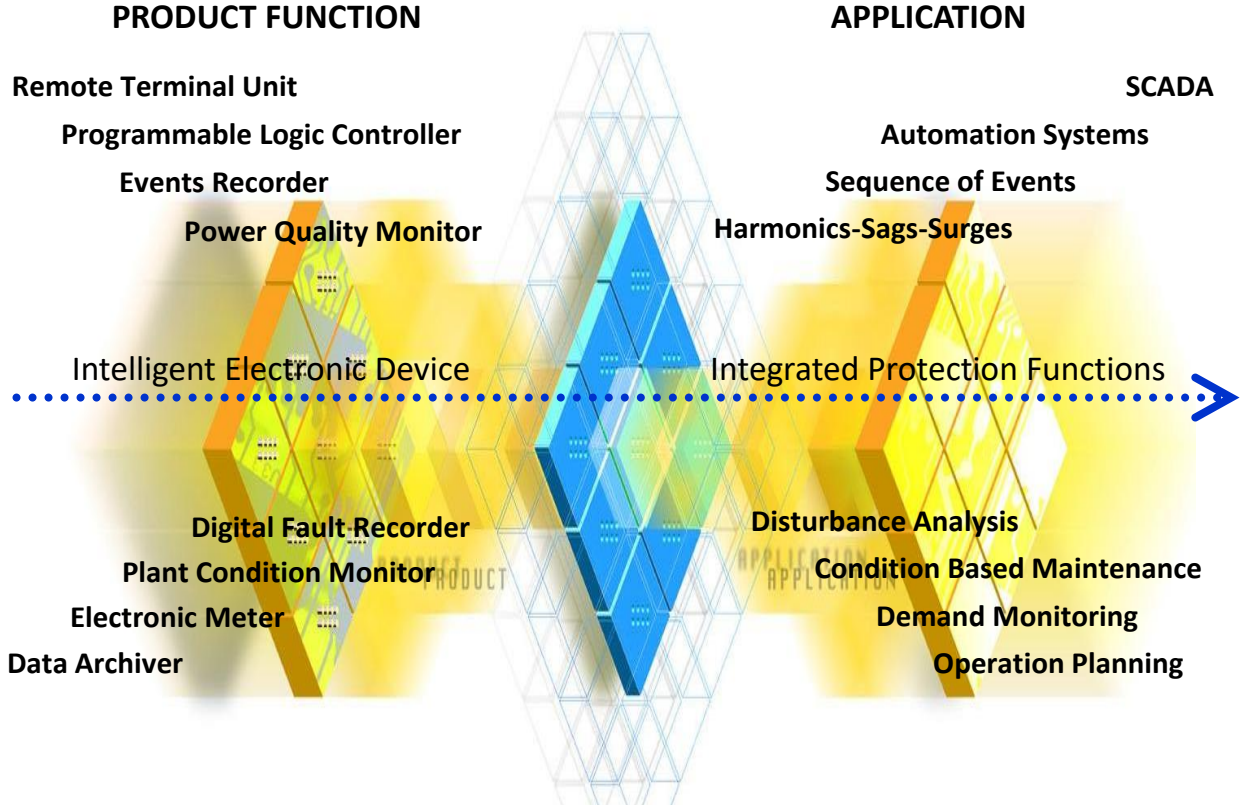
 11kV  
Serving the Midlands, South West and Wales





- Power generation, transmission and distribution
- RMU automation
- Pole top applications
- Solar PV and wind farms
- LV monitoring and control

# Callisto NX Automation Applications



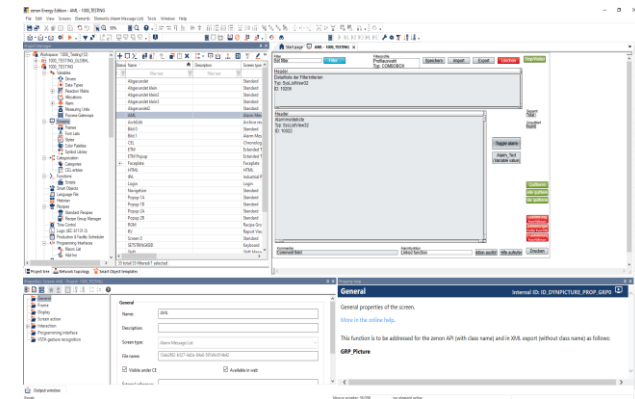
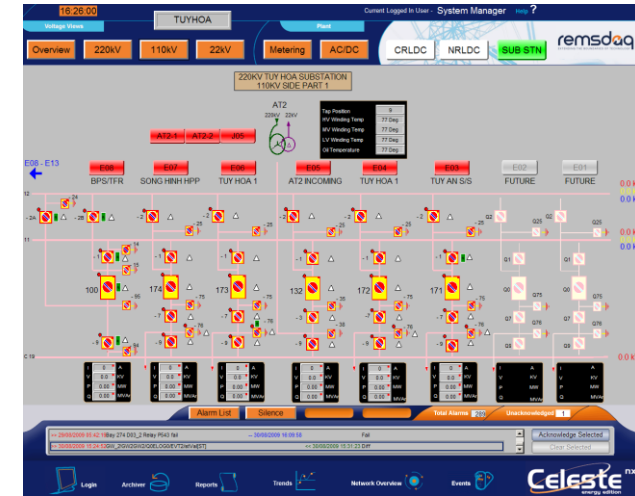
Remsdaq Technical Objective: to deliver a single product fulfilling multiple applications.



# Celeste NX Master Station Software Suite

Celeste NX delivers state of the art operator interface solutions ranging from a single workstation through to mission critical SCADA and Automation master stations with multiple redundancy and seamless transfer workstation configurations.

- Simple intuitive configuration editor
- Extensive SCADA and automation user facilities
- Multiple protocol support including IEC 61850 compliance
- Gateways including IEC 60870-5-101/104, DNP3, OPC, ICCP, SNMP, Syslog, Azure IoT and others
- Flexible alarm classification, grouping and filtering facilities
- Flexible on-line archiver with SQL export option
- Integral real-time and historic trending
- Powerful integrated report builder
- Integrated web-server option (HTTPS)
- Cyber secure to IEC 62351-4 with RADIUS authentication option
- Drivers for 3<sup>rd</sup> party devices including OCPP
- Exchange data via flexible protocols including MQTT, REST and AMQP
- Mapping System integration to Google, Microsoft Bing, OpenStreet and ArcGIS World Street Maps



# Callisto NX Custom Solutions

## IDNO project using networked Callisto NX nodes



Substation Automation System



Built-in Local HMI Screen



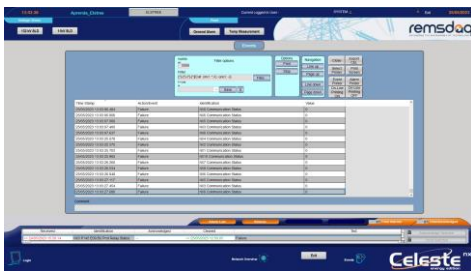
Plant Termination Bay

### Key Features

- Computerised Substation Automation System
- Integral touch screen user interface for local operation
- Secure internet browser IP access (single or multiple users)
- Centralised data acquisition and control
- Data concentration from protection relays, IEDs and meters
- Multi-protocol support including DNP3, Modbus IEC 61850 and IEC 60870-5-101/103/104
- Network management via SNMPv3
- Logging and reports using Syslog
- Cybersecure by design



Substation Transformer Mimic



Events List


### Options

- GPS time synchronisation
- Cloud-based HMI software
- Scalable HMI with N+X resilience
- Custom designs for any substation application
- Celeste Configuration Editor for project creation, editing and deployment
- Email and SMS alerts
- APN private network

Multiple Callisto NX RTUs in two server cabinets with a local HMI screen and secure web access over IP/mobile network





A satellite network visualization over Earth. The Earth is shown from space, with a network of white lines connecting various points across the globe. A prominent, glowing blue line runs diagonally across the image, representing a specific network path or data stream. The background is the dark, starry space of the universe.

**Over 50,000 Callisto RTUs installed worldwide**

**Over 25,000 in the UK**

Bespoke solutions manufactured or supplied by Remsdag.

**Umbilicals**



**Rogowski Coils**



**G Clamps**



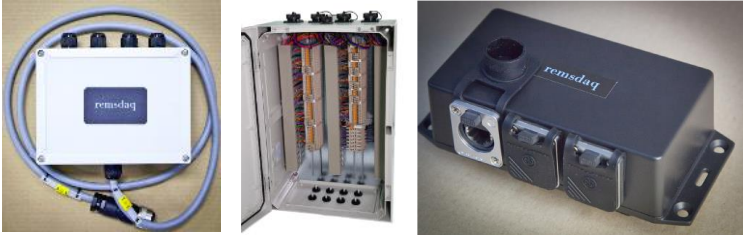
**Mounting Kits**



**LV Meter**



**Interface Boxes**



**Retrofit Actuators**



[www.remsdaq.com](http://www.remsdaq.com)  
Tel: +44 (0)1244 286 495